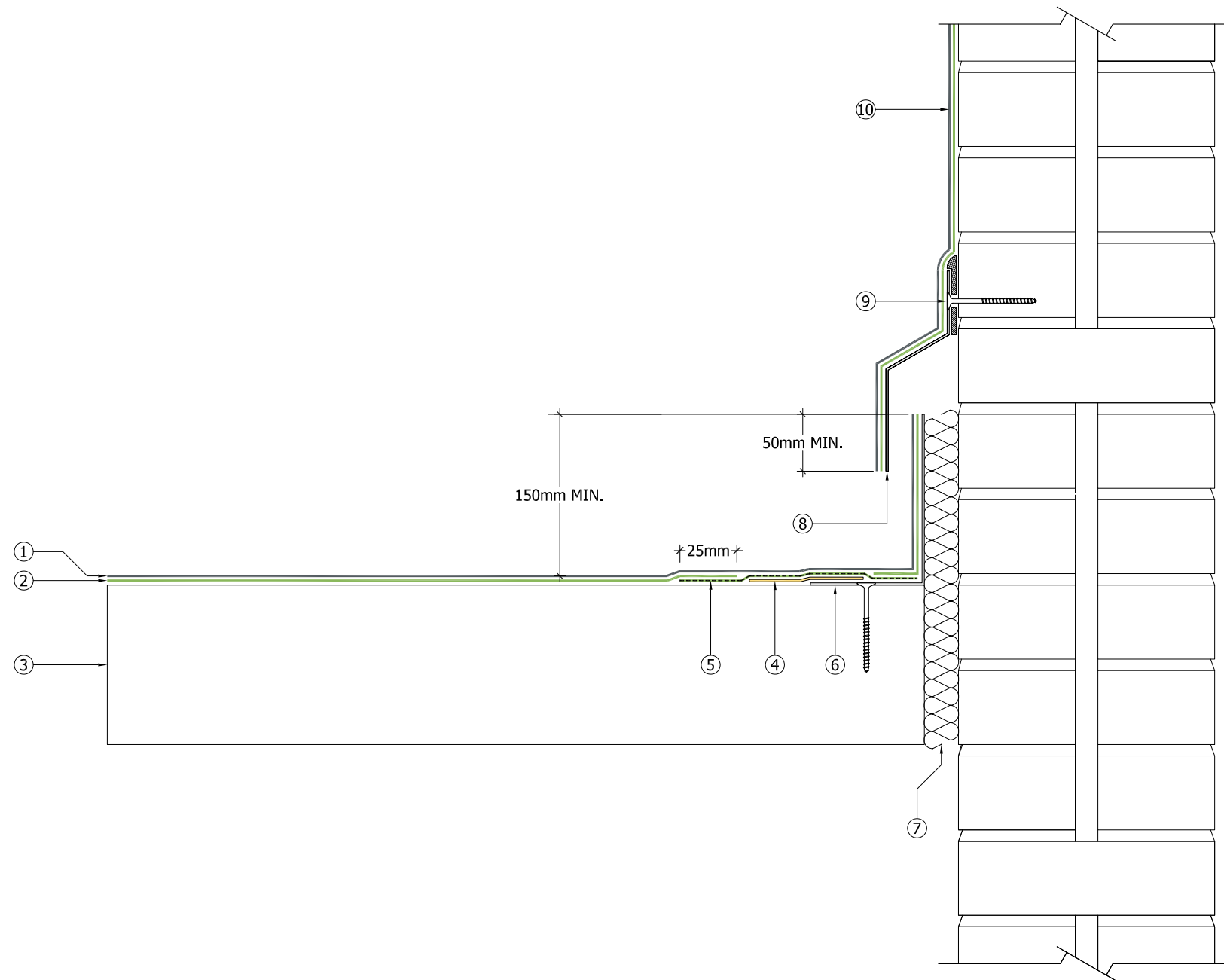


Key

- ① — Decaflex Top Coat applied in strict accordance with Sika Plastics Project Specification
- ② — Decaflex Embedment Coat with Reemat Premium GFM
- ③ Existing substrate prepared in strict accordance with Sika Liquid Plastics Project Specification
- ④ — 50mm wide low-tack masking/debonding tape applied centrally over junction
- ⑤ — Decaflex Embedment Coat embedded with 150mm Heavy Duty Flexitape
- ⑥ Mechanically fixed angle prepared and appropriately primed in strict accordance with Sika Liquid p[lastics Project specification
- ⑦ Existing movement joint; range of potential movement should be considered for the design of the capping
- ⑧ Mechanically fixed counter-flashing; appropriately primed, bedded on continuous 10mm beads of polyurethane sealant
- ⑨ Sika Liquid Plastics Polyurethane Sealant
- ⑩ Sika Liquid Plastics waterproofing coating appropriate to detail; terminated in an approved manner



Sika Liquid Plastics
 Sika House
 Miller Street
 Preston
 Lancashire PR1 1EA
 Telephone: 01772 259781
 Email: technical.customer.services@uk.sika.com
 Web: www.liquidplastics.co.uk

This drawing is solely intended to illustrate the correct application of Sika Liquid Plastics products and systems, it must be read in conjunction with the appropriate specification and current issue of relevant Technical Data Sheets. All elements bearing reference to structural and/or thermal design are shown indicatively and **should not be used** in whole or in part for any aspect of project design without consulting the relevant authorities.

For refurbishment projects, all aspects of the existing roof are deemed to be fully compliant with BS 6229:2003 (Code of Practice for Flat Roofs with Continuously Supported Coverings) or improved upon for instances where these standards are not met.

Site-specific details not covered by our range of Standard Details can be obtained by providing relevant information to the email address shown.

Project N^o

DWG N^o Revision

Project:

Drawing Title:
 Waterproofing Application Detail
 typical abutment movement joint

Scale: NTS @ A3 Drawn:

Date:

